

# Hemlock Collection



## PLAN SPECIFICATIONS:

- 3 Bedrooms
- 2 1/2 Baths
- 2 Car Garage
- 1,587 Sq.Ft.
- First Floor Walls: 8'
- Second Floor Walls: 8'
- 2 x 6 Exterior Walls
- Full Basement

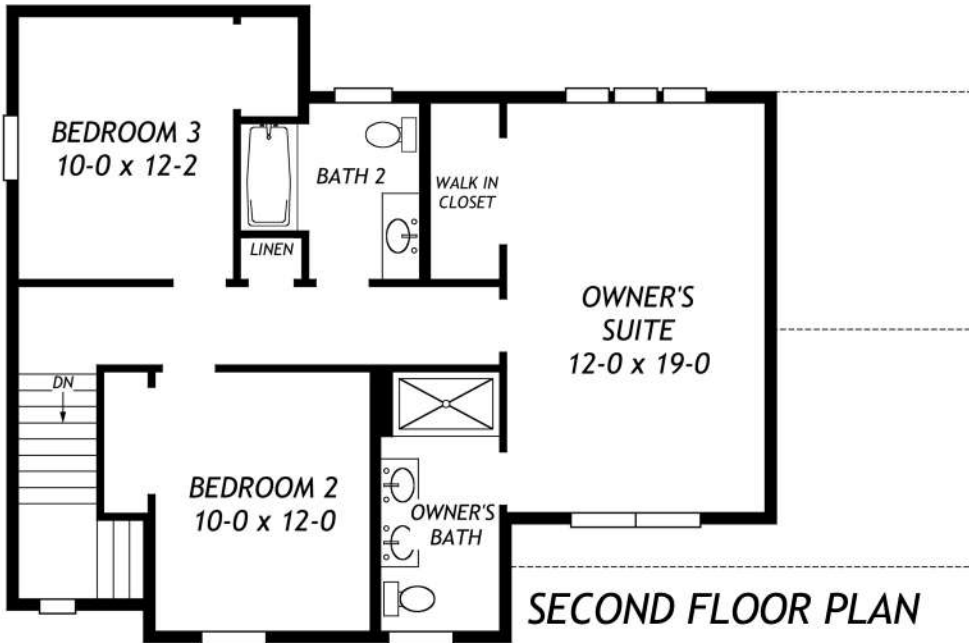
## Traditional Elevation

(Artist's Rendition - Shown With Available Options)

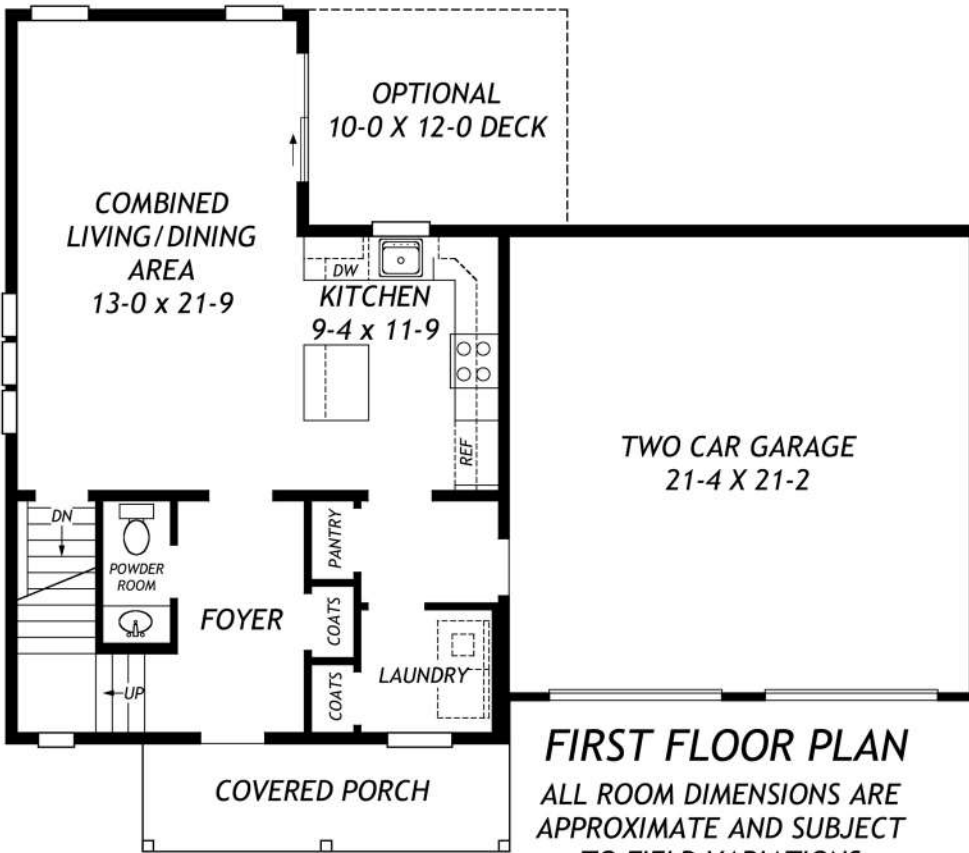
This traditional style house plan features a kitchen that opens to a combination living and dining room. This popular open floor plan provides ample space for both family time and entertaining. A powder room, laundry, and two car garage complete the first floor. An Owner's suite with a private bath and walk in closet, along with two additional bedrooms sharing a full bath, are located on the second floor.



Building Dreams, Creating Memories Since 1960  
[www.niczhomes.com](http://www.niczhomes.com)

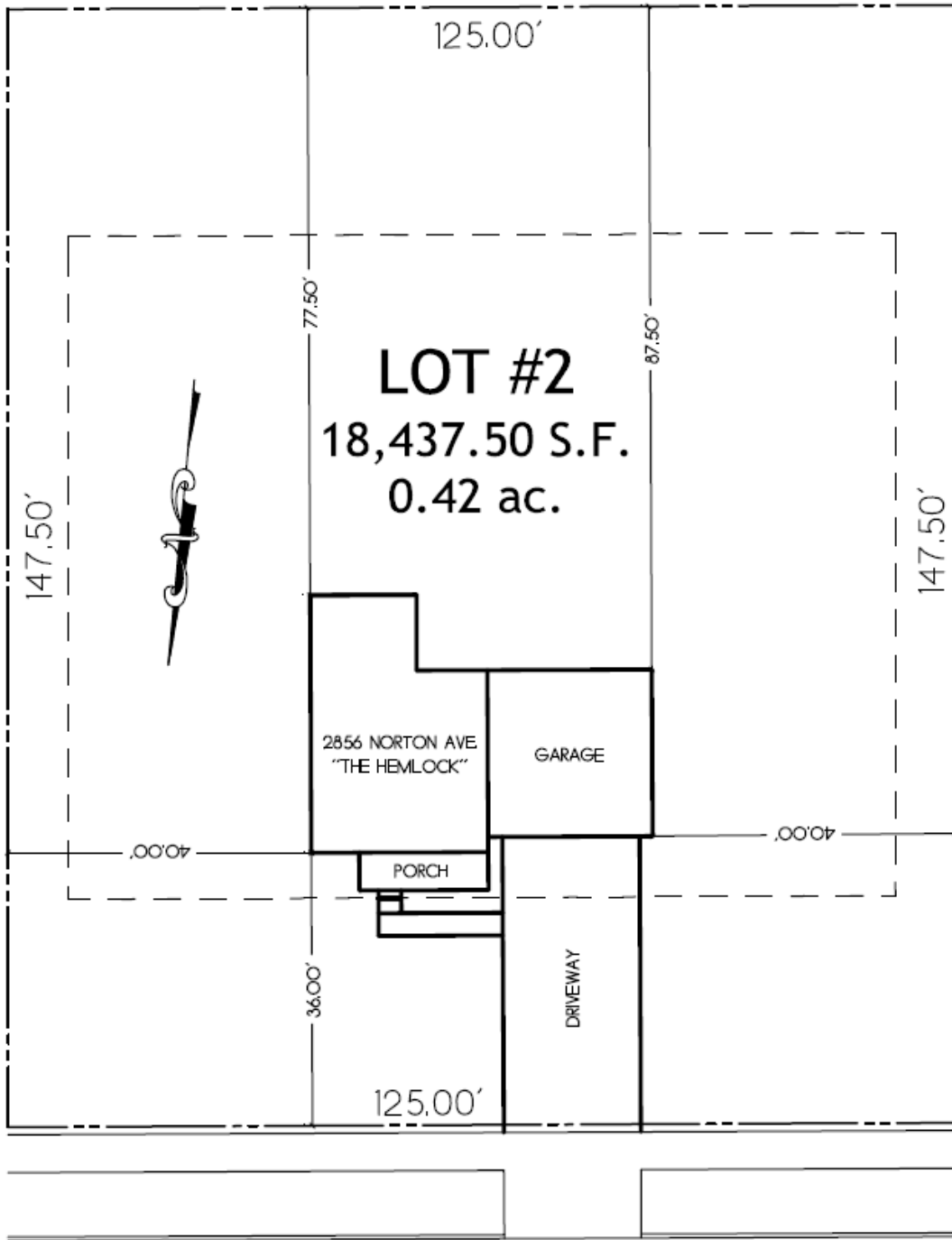


SECOND FLOOR PLAN



FIRST FLOOR PLAN  
ALL ROOM DIMENSIONS ARE APPROXIMATE AND SUBJECT TO FIELD VARIATIONS





NORTON AVE.



NIC ZAWARSKI AND SONS®

Building Dreams, Creating Memories Since 1960

[www.niczhomes.com](http://www.niczhomes.com)